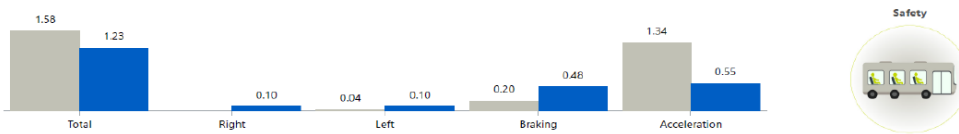


DRIVING FEEDBACK

The implementation of Traffilog in all our vehicles facilitates the company's feedback to drivers on driving behaviour and driving performance.

SAFETY EVENTS



Each driver receives a separate report on their driving performance. The driver compares his own driving in the previous three months (gray bar) with his driving in the current period (blue bar). Here, each driver receives an overview of overall safety events, right turns, left turns, braking and acceleration.

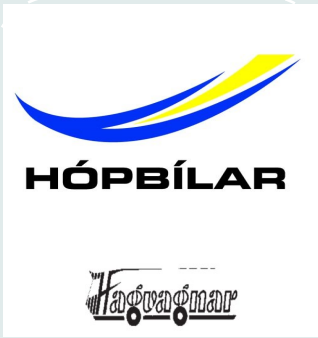
OVERVIEW



The driver also gets an overview of his personal driving time (h:min), the distance he has driven during the period (km), how long the cars in his use have been idling (h:min) along with fuel consumption (L/100km).

COMPARISON

In addition to comparing new results with older ones in terms of their own performance, a driver can see the average of the group he is part of. In addition, the driver receives information about the best value of his group in the individual elements for him.



In the newsletter

- Driving feedback 1
- Driving behaviour in March 2
- Safety events 2
- Log in 2
- Idling 3
- New car in our fleet 4

OF DRIVING BEHAVIOUR AND COMPARATIVE STATISTICS MARCH '24

We get information about the driving behaviour of cars and drivers from the Traffilog system. Our cars and driving routes are different, the tasks are different. From the system, however, we get important comparisons within categories and comparisons with similar companies in the Nordic countries.

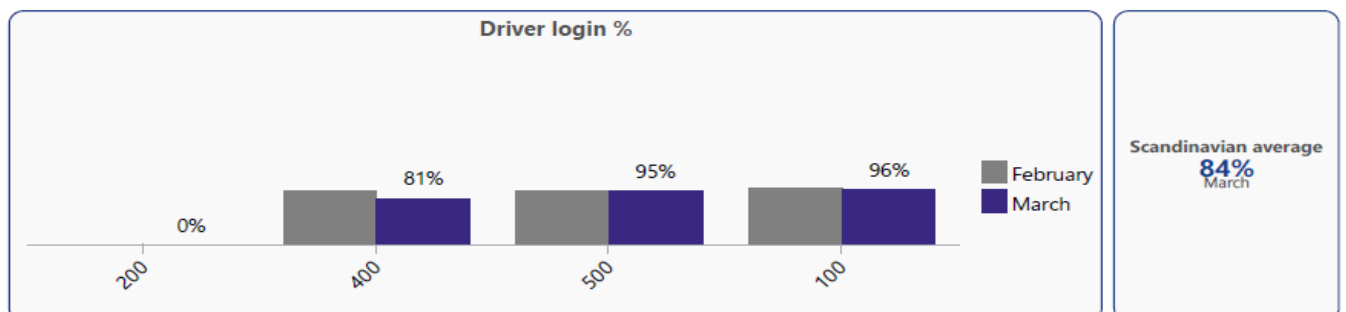
SAFETY EVENTS

This category provides information about so-called security incidents. This means sharp turns to the right or left, sudden braking and speed acceleration.



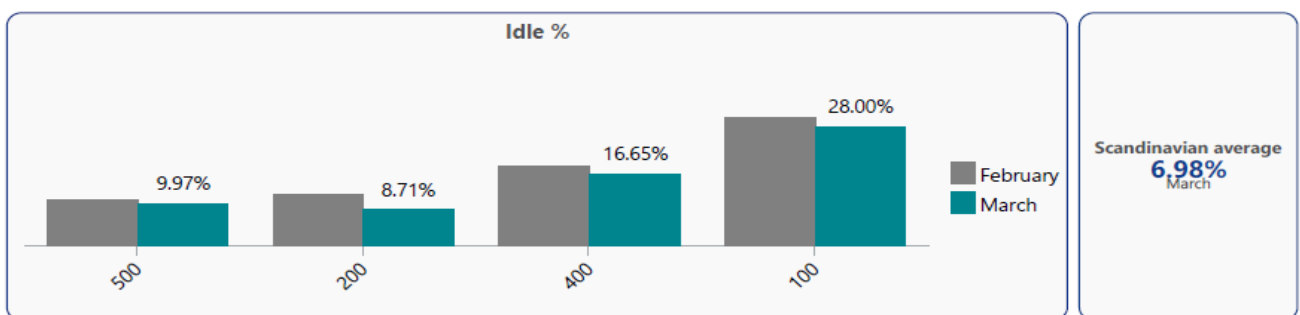
DRIVERS LOG-IN

One of the most important things is the driver's registration in the cars, log in. The use of a driver's card in the tachograph is also in the law and involves fines for both driver and company if there is a failure.



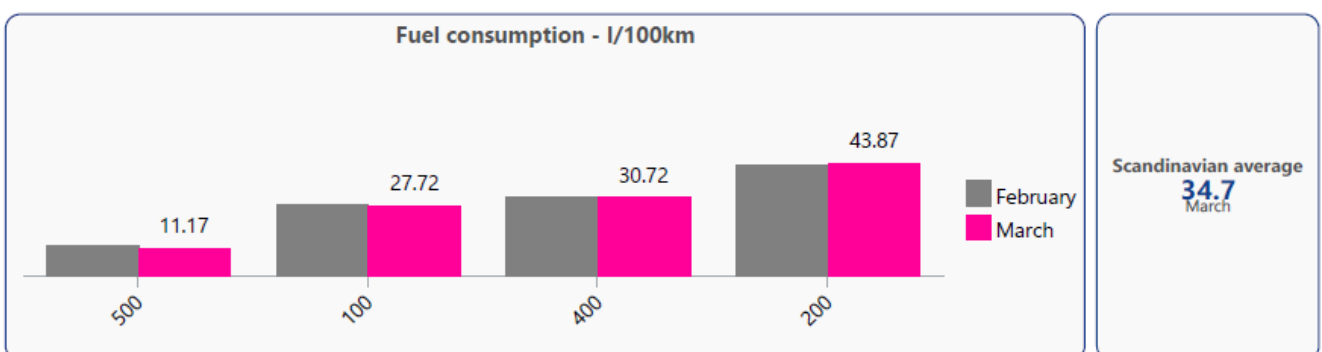
IDLING

Pollution is sometimes unnecessary. Idling vehicles cause health-damaging pollution. Fewer people know that it is forbidden to leave a stationary vehicle running for more than a short time, unless specifically stated. An idling vehicle emits large amounts of air pollutants that are harmful to health. There is therefore an important part of the drivers job to reduce pollution from the car by not idling it, where possible.



FUEL CONSUMPTION

At Hópbílar we closely monitor the fuel consumption of our vehicles. The company's environmental policy is regularly reviewed, along with continuous improvement of Hópbílar's environmental management system. The overview shows fuel consumption, litres pr 100km.





NEW CAR IN THE FLEET

A NEW VDL CAR TO HÓPBÍLAR

A new VDL Futura car joined our fleet recently.

The VDL cars are manufactured by the VDL Bus & Coach factories in Valkenswaard in Holland, not far from Eindhoven.

The 53 passenger car has been given the internal number 115 in our fleet.

It is equipped with all basic comfort and safety equipment and has already started serving our passengers on the country's roads.



Hópbílar hf.
Melabraut 18
220 Hafnarfirði

Editor:
Leifur S. Garðarsson
Project manager

